

GELBIEH & RED ANGUS BULL SALE

Private Treaty Sale

SELLING 15 BULLS



L182 Full Brother N276 sells

- Offering -

Red & Black • Gelbvieh • Balancer • Red Angus

HANDEL FARMS

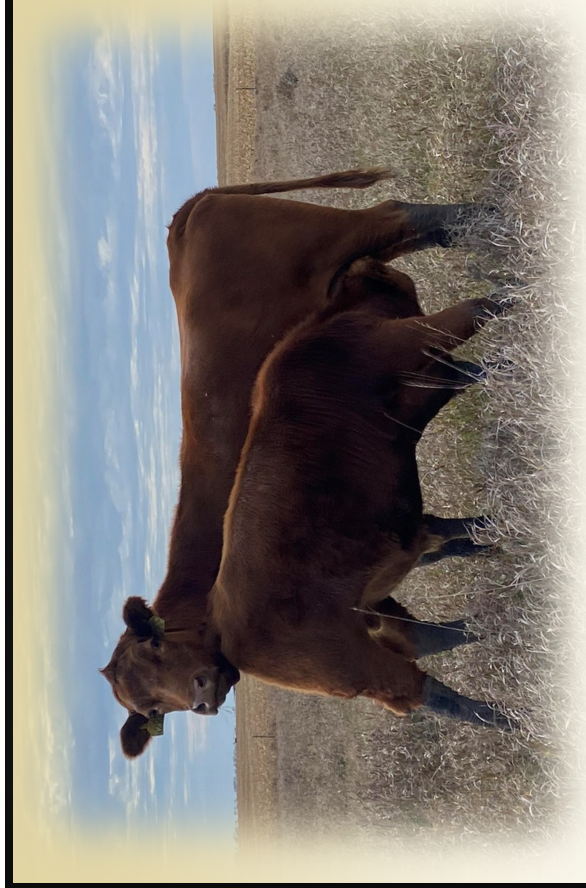


N153 TITANIC

Austin & Maria Handel & Family

Handel Farms
Austin & Maria Handel
28574 435th Ave.
Menno, SD 57045

Return Service Requested



Handel Farms Gelbvieh & Red Angus Private Treaty Bulls

GELBVIEW & RED ANGUS

Come check out the bulls on our farm at:

28574 435th Ave.

Menno, SD 57045

Contact Austin to set up a time:
(605)760-4857

Blue Shading indicates EPDs that rank in the top 35% of the breed.

Breed Average EPDs							
	CED	BW	WW	YW	Milk	RE	MB
Gelbvieh	13	0.1	70	104	23	0.66	0.19
Balancer	13	-0.6	72	113	23	0.49	0.36
Angus	6	1.2	66	117	26	0.65	0.66
Red Angus	13	-1.7	68	108	26	0.13	0.46

View video of the bulls on
www.TheLivestockLink.com



All sight unseen purchases are guaranteed to your satisfaction.

Terms & Conditions

Terms of the sale are cash. Settlement is to be made with the immediately following the sale.

All bulls are guaranteed breeders according to the AGA guidelines. In no event will the seller be responsible for more than the purchase price of the bull.

Handel Farms is retaining 1/3 revenue sharing semen interest in every bull selling in this sale. Full possession and full salvage value sells on all bulls unless otherwise noted.

Welcome Cattlemen & Friends,

We have several bulls for sale private treaty. All have been semen tested by Sweetgrass Vets, had prebreeding shots.

The bulls have developed slowly, not pushed, started on a 46 Mcal ration and stepped up to a 49 Mcal ration in late December. Recently they were stepped down to 45 Mcal to get them ready to transition to grass. They are developed to promote longevity and fertility. We do not creep feed and all were ran on pasture with dams until November.

Complete performance and EPD's have been provided for your benefit. The bulls are registered and registration papers will be automatically transferred.

Put more pounds and value on your calf crop with proven Gelbvieh, Balancer, and Red Angus genetics. We use proven herd sires with calving ease, fertility, growth, carcass and maternal excellence. Many of these bulls have low birth and high growth EPD's. We are more than willing to recommend bulls to meet your specifications.

We invite you to the farm to inspect the cattle.

If you have any questions, please feel free to contact us.

IF YOU WOULD LIKE TO SEE UPDATED PICTURES OR VIDEO CONTACT AUSTIN AS THESE ARE FROM FEBRUARY.

Watch for updates on our website at.

HANDELFARMS.COM

How to use the QR Codes



Each lot has a QR Code that will play a video of that specific bull on The Livestock Link.

1. Open the camera app on your smart device.
2. Hover over the QR Code in the catalog.
3. Tap the link that appears to view the video of that lot!



Austin & Maria Handel & Family

28574 435th Ave., Menno, SD 57045

605-760-4857

N142		OUTLER N142		3/25/2025						
		AMGV1647716	Homo Black	Polled						
		77.8%GV/17.2%AN/4.7%AR								
BW	98	CAROLINA LEVERAGE 3214A								
WW	668	OUTLIER 42F								
YW	1163	206D								
FS	6.2	CTR MOMMA MAKER 0056X								
SC	36.5	HAND LADY MOMMA E27								
GAIN	3.1	HAND LADY PIONEER C261								
CED	BW	WW	YW	MK	TM	CEM	YG	CW	REA	MB
6	2.7	88	129	21	65	4	-0.1	38	0.55	0.35



- He has a lot of length to him and will add pounds.
- Out of a top performing cow, E27 always has a good one.
- He was one of my top picks of all the bulls we had this year.

N153		TITANIC N153		3/29/2025						
		AMGV1647913	Homo Black	Polled						
		76.2%GV/23.5%AN								
BW	90	EMULATION 71E								
WW	539	TITANIC 352H								
YW	1001	202E								
FS	5	BEAS 2810Z								
SC	33.7	HAND LADY AFLAME D180								
GAIN	2.9	HAND LADY LEADTIME T20								
CED	BW	WW	YW	MK	TM	CEM	YG	CW	REA	MB
9	1.8	66	98	13	46	5	-0.1	20	0.32	0.23



- The most moderate black bull we have left.
- This is the last Titanic son we will ever sell, he provided our herd with calves that have a lot of middle to them.

N296		OUTLIER N296		4/22/2025						
		AMGV1647945	Black	Polled						
		87.5%GV/12.5%AN								
BW	91	CAROLINA LEVERAGE 3214A								
WW	648	OUTLIER 42F								
YW	1102	206D								
FS	5.2	GKG MR 620 045X								
SC	32.9	HAND LADY NEBRASKA E244								
GAIN	2.9	HAND LADY PRIME Y35								
CED	BW	WW	YW	MK	TM	CEM	YG	CW	REA	MB
10	1.7	79	113	22	61	5	-0.2	32	0.64	0.23



- A less framy Outlier son, with a lot of growth as well.
- Would be long sold if he weren't Hetero Black.
- Outlier stamps his calves with POUNDS at weaning.



N10		TOPS DOWN N10									
		2/10/2025									
		AMGV1648597		Red		Polled					
		43.4%GV/47.7%AR/6.6%AN									
BW	66	JRI POP A TOP 2 ETN									
WW	577	TOPS DOWN									
YW	1103	MS DEEP IMPACT 126A 6023D									
FS	4.7	ULRICH BENELLI 1919									
SC	35.4	HAND LADY BENELLI L253									
GAIN	3.3	HAND HAND LADY CARDSHARK G13									
CED	BW	WW	YW	MK	TM	CEM	YG	CW	REA	MB	
20	-4.8	57	83	24	53	8	-0	22	0.23	0.22	

-HEIFER BULL, Top 3% CED, Top 2% BW — Sleep all night—
-Balancer Tops Down son with the most performance that I've seen in his sire group, out of a great first calf heifer.



N52		BUCKLE UP N52									
		2/26/2025									
		AMGV1648202		Red		Polled					
		9.3%GV/87.9%AR/2.5%AN									
BW	75	SIX MILE BUCKLE UP 296B									
WW	529	ULRICH BUCKLE UP 2006									
YW	1088	WDZ-GLS DOLLY 113 ET									
FS	4.5	DAHLKE OUTCOME 016H									
SC	33.9	HAND LADY OUTCOME L1									
GAIN	3.5	HAND LADY BENELLI J111									
CED	BW	WW	YW	MK	TM	CEM	YG	CW	REA	MB	
17	-3.9	54	81	25	52	8	0.02	19	0.14	0.19	


-HEIFER BULL, Top 10 % CED, Top 4% BW — Sleep all night—
-Low percentage bull with extremely predictable calving ease, his sire and maternal grandsire both were outstanding for us.



N96		KINGSLEY N96									
		3/21/2025									
		AMGV1647959		Red		Polled					
		75%GV/24.2%AR									
BW	71	TRIPLE K HUSKER G413									
WW	499	TRIPLE K KINGSLEY H44K									
YW	1047	E44H Ginger's Lil Sis									
FS	5.1	ULRICH BENELLI 1919									
SC	33.7	HAND LADY BENELLI J87									
GAIN	3.5	HAND LADY BUSINESS F133									
CED	BW	WW	YW	MK	TM	CEM	YG	CW	REA	MB	
17	-1.9	61	92	22	53	8	-0.2	27	0.45	0.35	

-HEIFER BULL, Top 10% CED, Top 20% BW
-Highest percentage heifer bull we have.
-Maternal Grand Dam has been a top producer in our herd.




N133		BENELLI N133		3/27/2025						
		RAAA5207211	Red	Polled						
		100% AR								
BW	82	BENELLI 102B								
WW	667	ULRICH BENELLI 1919								
YW	1071	ULRA BELLA 1407								
FS	5.17	WEBR CARDSHARK 1214								
SC	34.6	HAND HAND LADY CARDSHARK G13								
GAIN	2.53	HAND GALLS MS BETH 5316								
CED	BW	WW	YW	MK	TM	CEM	YG	CW	REA	MB
13	-1.3	68	104	25		8	0	20	0.2	0.24

-Was my top pick around weaning time.

-Benelli tends to make calves with a tick more frame and adds pounds.




Sale Pending

N154		TYCOON N154		3/30/2025						
		AMGV1656146	Red	Polled						
		18.6%GV/70.4%AR/11.1%AN								
BW	76	RED SSS TYCOON 225E								
WW	531	ULRICH TYCOON 2242								
YW	1137	ULRICH BELLE 1940								
FS	4.6	ULRA POWER EYE 1741								
SC	33.6	HAND LADY POWER EYE H314								
GAIN	3.8	HAND LADY BUSINESS F109								
CED	BW	WW	YW	MK	TM	CEM	YG	CW	REA	MB
14	-1.8	66	107	25	57	5	0.12	36	0.16	0.32

-Heifer Bull, Top 30% CED Top 20% BW

-This guy has a lot of middle to him, one of my favorites, also has more performance than numbers suggest, STOUT.




N171		TYCOON N171		4/1/2025						
		AMGV1649502	Red	Polled						
		3.2%GV/89.9%AR/6.3%AN								
BW	67	RED SSS TYCOON 225E								
WW	600	ULRICH TYCOON 2242								
YW	1217	ULRICH BELLE 1940								
FS	5.1	ULRICH BENELLI 1919								
SC	35.1	HAND LADY BENELLI J55								
GAIN	3.9	HAND LADY NO WORRIES F33								
CED	BW	WW	YW	MK	TM	CEM	YG	CW	REA	MB
17	-3.2	71	120	26	61	7	0.07	38	0.22	0.33

-HEIFER BULL– Spread Bull Top 10% CED & BW.

-Top 35% YW, he covers the spread. Attractive Phenotype.

-Ultra low percentage– 96% Red Angus.




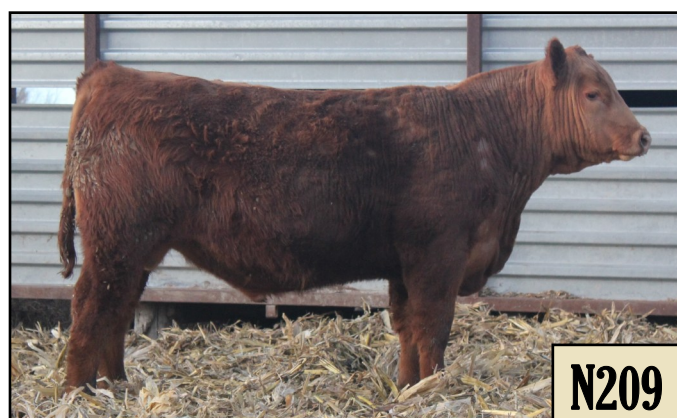
N195		TYCOON N195		4/4/2025						
		AMGV1649503	Red	Polled						
		18.6%GV/69.6%AR/11.2%AN								
BW	84	RED SSS TYCOON 225E								
WW	516	ULRICH TYCOON 2242								
YW	989	ULRICH BELLE 1940								
FS	4.7	ULRICH BENELLI 1919								
SC	32.2	HAND LADY BENELLI J111								
GAIN	3	HAND LADY BUSINESS F109								
CED	BW	WW	YW	MK	TM	CEM	YG	CW	REA	MB
11	-0.5	62	95	23	54	4	0.06	27	0.17	0.33



N195


-Nice lower percentage Balancer bull out of a excellent cow family.
 -The Tycoon sire group has really been exceptional this year.

N209		BENELLI N209		4/6/2025						
		RAAA5207217	Red	Polled						
		99.9% AR								
BW	87	BENELLI 102B								
WW	611	ULRICH BENELLI 1919								
YW	1096	ULRA BELLA 1407								
FS	4.82	WEBR CARDSHARK 1214								
SC	32.9	HAND LADY CARDSHARK F233								
GAIN	3.03	HAND OUTERLIMIT Z82								
CED	BW	WW	YW	MK	TM	CEM	YG	CW	REA	MB
9	0	69	109	27		6	0.03	23	0.17	0.27



N209

-Purebred Red Angus
 -Benelli son out of one of our top 5-10 most productive red cows we have. Will make good replacements.

N210		KINGSLEY N210		4/7/2025						
		AMGV1647763	Red	Polled						
		84.4%GV/9.4%AR/6.3%AN								
BW	86	TRIPLE K HUSKER G413								
WW	560	TRIPLE K KINGSLEY H44K								
YW	1135	E44H Ginger's Lil Sis								
FS	4.7	513C								
SC	34.9	HAND LADY MASTER E11								
GAIN	3.6	HAND LADY PIONEER C93								
CED	BW	WW	YW	MK	TM	CEM	YG	CW	REA	MB
12	-0.4	69	106	18	52	5	-0.2	32	0.58	0.33

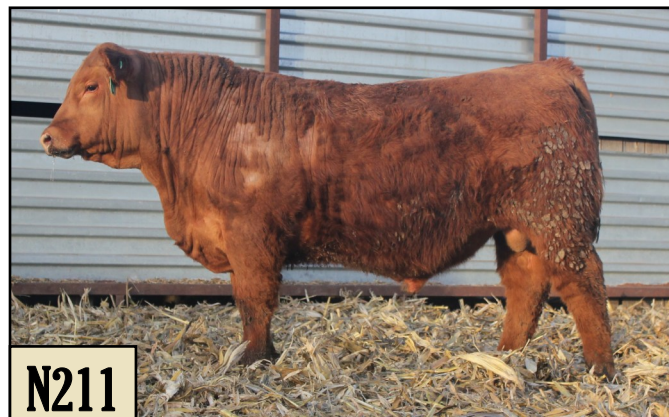


N210

-Highest percentage red Gelbvieh bull we have.
 -Has a lot of growth to him, his sire group as a whole was set back early on so them making it to here, they proved it.

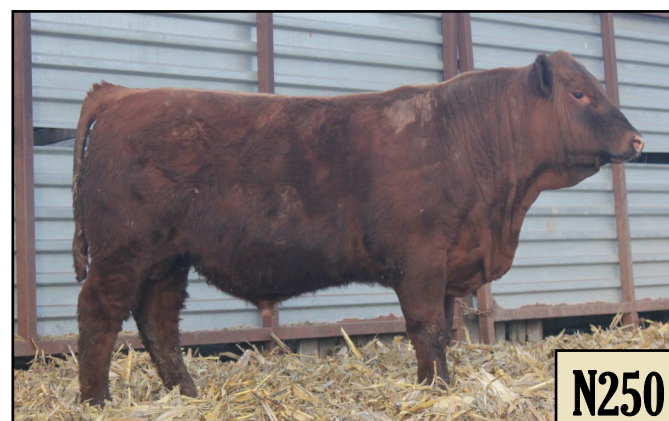


N211		TYCOON N211		4/6/2025						
		AMGV1656147	Red	Polled						
		20.4%GV/73.5%AR/6.2%AN								
BW	80	RED SSS TYCOON 225E								
WW	564	ULRICH TYCOON 2242								
YW	1112	ULRICH BELLE 1940								
FS	4.5	ULRA POWER EYE 1741								
SC	34.3	HAND LADY POWER EYE J45								
GAIN	3.5	HAND LADY MASTER G279								
CED	BW	WW	YW	MK	TM	CEM	YG	CW	REA	MB
15	-2	68	109	24	58	6	0.1	35	0.18	0.33



-Heifer Bull Top 25% CED Top 20% BW
 -3/4 Brother with N154, this one is more masculine and a little less frame to him.

N250		TYCOON N250		4/10/2025						
		AMGV1649636	Red	Polled						
		10.3%GV/81.3%AR/8.4%AN								
BW	93	RED SSS TYCOON 225E								
WW	623	ULRICH TYCOON 2242								
YW	1221	ULRICH BELLE 1940								
FS	5.7	POWER EYE 161X								
SC	39.5	HAND LADY POWER EYE H85								
GAIN	3.8	HAND OUTERLIMIT Z37								
CED	BW	WW	YW	MK	TM	CEM	YG	CW	REA	MB
10	-0.1	73	118	25	62	3	0.11	37	0.16	0.38



Sale Pending

-Dark Red. Larger framed Tycoon son.
 -Top 35% Yearling weight
 -Growth in a low percentage 89% Red Angus Bull.

N276		BENELLI N276		4/15/2025						
		RAAA5207213	Red	Polled						
		99.9% AR								
BW	83	BENELLI 102B								
WW	635	ULRICH BENELLI 1919								
YW	1065	ULRA BELLA 1407								
FS	4.96	WEBR CARDSHARK 1214								
SC	35.2	HAND HAND LADY CARD SHAR								
GAIN	2.69	HAND HAND LADY OUTERLIMITS D38								
CED	BW	WW	YW	MK	TM	CEM	YG	CW	REA	MB
11	-1	66	100	26		7	0.02	16	0.1	0.26



-Full brother is our bull L182, otherwise I'd keep this guy.
 -Great phenotype out of a very productive cow.
 -Keep all the daughters, this guy will build you a herd.



